

of a membership numbering about 30,000 representing *all phases* of pharmacy from *all parts* of the United States but also that prestige which is the proud heritage of the American Pharmaceutical Association earned by 69 years of active service for the betterment of American pharmacy.

In closing, the writer would say that he believes that not only would such a House of Delegates aid in strengthening the American Pharmaceutical Association but it would also go a long way toward building up all other pharmaceutical organizations, be they local, state, or divisional.

SELECTION OF PLACES FOR MEETINGS OF THE AMERICAN PHARMACEUTICAL ASSOCIATION.

BY T. J. BRADLEY.*

If the places for the conventions of the American Pharmaceutical Association were selected with the sole object of convenience in transacting the necessary business, they would probably all be held at points in the northeastern section of the country, where the greatest concentration of population and membership is found. This however, would so affect the interest in the Association and its work that there would be a loss of membership and influence throughout the country and the Association would soon be reduced to the status of a local organization. It is necessary to visit the various sections periodically in order to keep up the wide-spread membership which is essential for a truly national organization. Also one of the most attractive things about regular attendance at the annual meetings is the opportunity this attendance affords for seeing parts of the country that would not be visited otherwise; to this can be added the pleasure of yearly meetings with the many friends we make in the Association.

The influences mentioned above make for holding meetings in widely different parts of the country, but the present high cost of travelling, and the concentration of membership in the northeast make it desirable to meet more frequently in the latter section than in the others, and the progression of meeting places must be a compromise between these extremes. During the last few years the Association has met in San Francisco, 1915; Atlantic City, 1916; Indianapolis, 1917; Chicago, 1918; New York, 1919; Washington, 1920; and this year we are to visit New Orleans.

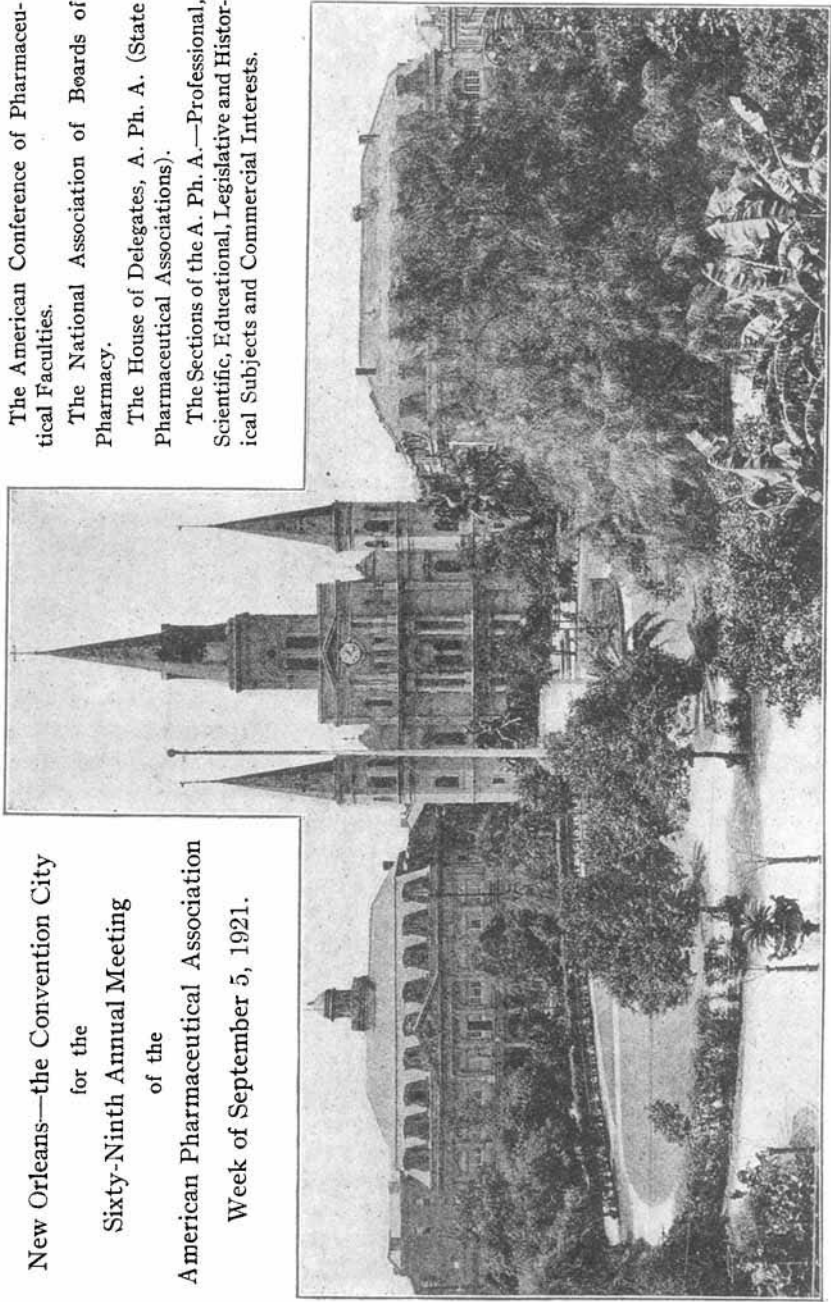
The writer has given considerable study to these conditions and he believes that the Committee on Time and Place of Meeting should plan the places of meetings for more than one year in advance, so that a logical progression of places may be decided upon. In this plan only the general sections of the country should be designated, leaving the exact places to be selected each year. By this arrangement each part of the country will be visited as often as circumstances warrant.

In view of the facts presented above it appears that the Association should convene in the central states in 1922, in the northwestern states in 1923, and in the eastern states in 1924.

*Chairman Committee on Time and Place of Meeting, A. Ph. A.

New Orleans—the Convention City
for the
Sixty-Ninth Annual Meeting
of the
American Pharmaceutical Association
Week of September 5, 1921.

The American Conference of Pharmaceu-
tical Faculties.
The National Association of Boards of
Pharmacy.
The House of Delegates, A. Ph. A. (State
Pharmaceutical Associations).
The Sections of the A. Ph. A.—Professional,
Scientific, Educational, Legislative and Histor-
ical Subjects and Commercial Interests.



JACKSON SQUARE, CATHEDRAL AND CABILDO OF NEW ORLEANS

TRANSPORTATION TO THE NEW ORLEANS MEETING OF THE AMERICAN PHARMACEUTICAL ASSOCIATION.

The following is abstracted from a recent communication of Chairman Hugo H. Schaefer of the Transportation Committee, A. Ph. A. See also information p. XI, this issue, JOURNAL A. Ph. A.

Tickets on Certificate plan are on sale September 1 to 7, inclusive; they must be viséd at New Orleans September 8 or 9, and will bear a final return limit to reach starting point up to midnight of September 13. Stopovers en route, or on return trip, are granted on such tickets within the life of their limit at the cities of Philadelphia, Baltimore and Washington. Return trip may also be made by boat, and reservations should be made at once; *none can be obtained for going trip.*

Be certain to ask for ticket on Certificate Plan, and see your agent early, so that there will be no question of securing such tickets; 350 of them must be viséd, or the return rate of one-half fare will not be allowed. A receipt will not answer, you must have a certificate.

REGULAR ONE-WAY RATES	RAILROAD FARE.	TAX.	TOTAL.
New York City.....	\$48.38	\$3.87	\$52.25
North Philadelphia, Pa.....	45.14	3.61	48.75
Baltimore, Md.....	41.68	3.33	45.01
Washington, D. C.....	40.20	3.22	43.42
Richmond, Va.....	37.55	3.00	40.55
Atlanta, Ga.....	17.78	1.42	19.20
Montgomery, Ala.....	11.48	.92	12.40
Mobile, Ala.....	5.04	.40	5.44

Half fare on return trip, *via* same route, provided 350 tickets have been viséd.

PULLMAN FARES TO NEW ORLEANS, INCLUDING SURCHARGE AND WAR TAX.

	LOWER.	UPPER.	DRAWING ROOM.	COMPARTMENT.
From New York City.....	\$15.80	\$12.64	\$56.70	\$44.55
North Philadelphia, Pa.....	14.58	11.66	51.84	41.31
Baltimore, Md.....	12.96	10.37	45.36	36.45
Washington, D. C.....	12.96	10.37	45.36	36.45
Richmond, Va.....	12.15	9.72	43.74	34.02
Atlanta, Ga.....	6.08	4.88	22.68	17.01
Montgomery, Ala.....	4.05	3.24	14.58	11.34

In order to get as large a group together as possible it was deemed advisable to select one train, namely: "The New York and New Orleans Limited."

SCHEDULE OF "NEW YORK AND NEW ORLEANS LIMITED."

A. Ph. A. Convention opens on Tuesday, September 6, however the American Conference of Pharmaceutical Faculties and National Association of Boards of Pharmacy meet Monday, September 5.

STANDARD TIME.

Leave	New York City, Penna. R. R.....	5.05 P.M. Saturday, September 3
	North Philadelphia, Pa., Penna. R. R.	7.14 P.M. Saturday, September 3
	Baltimore, Md., Penna. R. R.....	9.30 P.M. Saturday, September 3
	Washington, D. C., Southern R. R....	10.55 P.M. Saturday, September 3
	Richmond, Va., Southern R. R.....	11.00 P.M. Saturday, September 3
	Atlanta, Ga., West Pt. Rte.....	6.10 P.M. Sunday, September 4
	Montgomery, Ala., L. & N. R. R.....	11.50 P.M. Sunday, September 4
	Mobile, Ala., L. & N. R. R.....	5.15 A.M. Monday, September 5
Arrive	New Orleans, La., L. & N. R. R....	9.40 A.M. Monday, September 5

RETURN TRIP FROM NEW ORLEANS.

The morning train from New Orleans, 8.30 A.M., arrives in New York City on second day at 6.45 A.M. and the train leaving New Orleans at 9.35 P.M. arrives in New York City at 3.18 P.M., second day.

Boat leaves New Orleans, Saturday, September 10, arrives in New York on the following Thursday.

The Railway Company suggests that reservations be made through A. Ph. A. Transportation Committee, and not later than August 24. One car will be set aside for A. Ph. A. members, others reserved when first car is filled.